

DEEPWATER ACTIVITIES IN THE GULF OF MEXICO

Jim Grant

Minerals Management Service

Field Operations

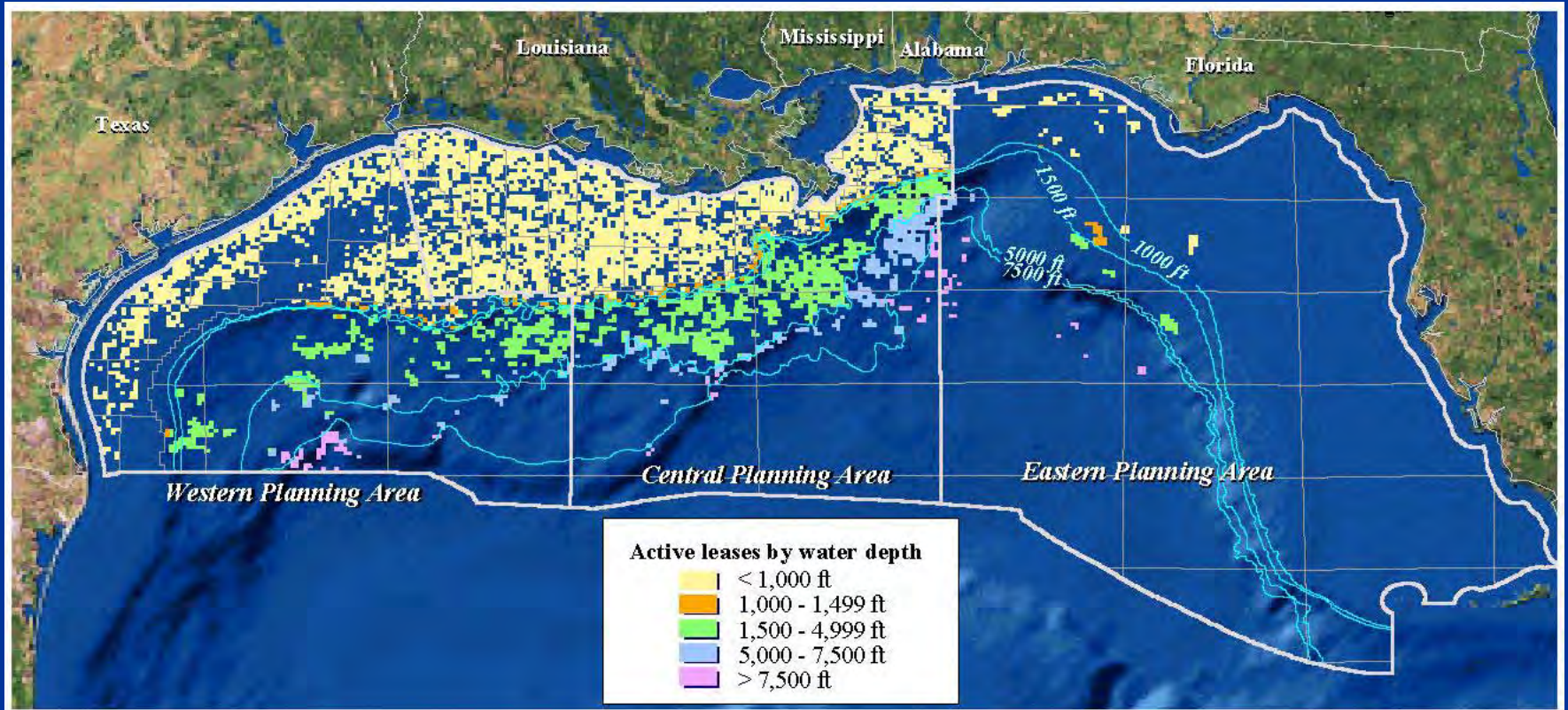
Gulf of Mexico Region

September 2002

FPSO Workshop

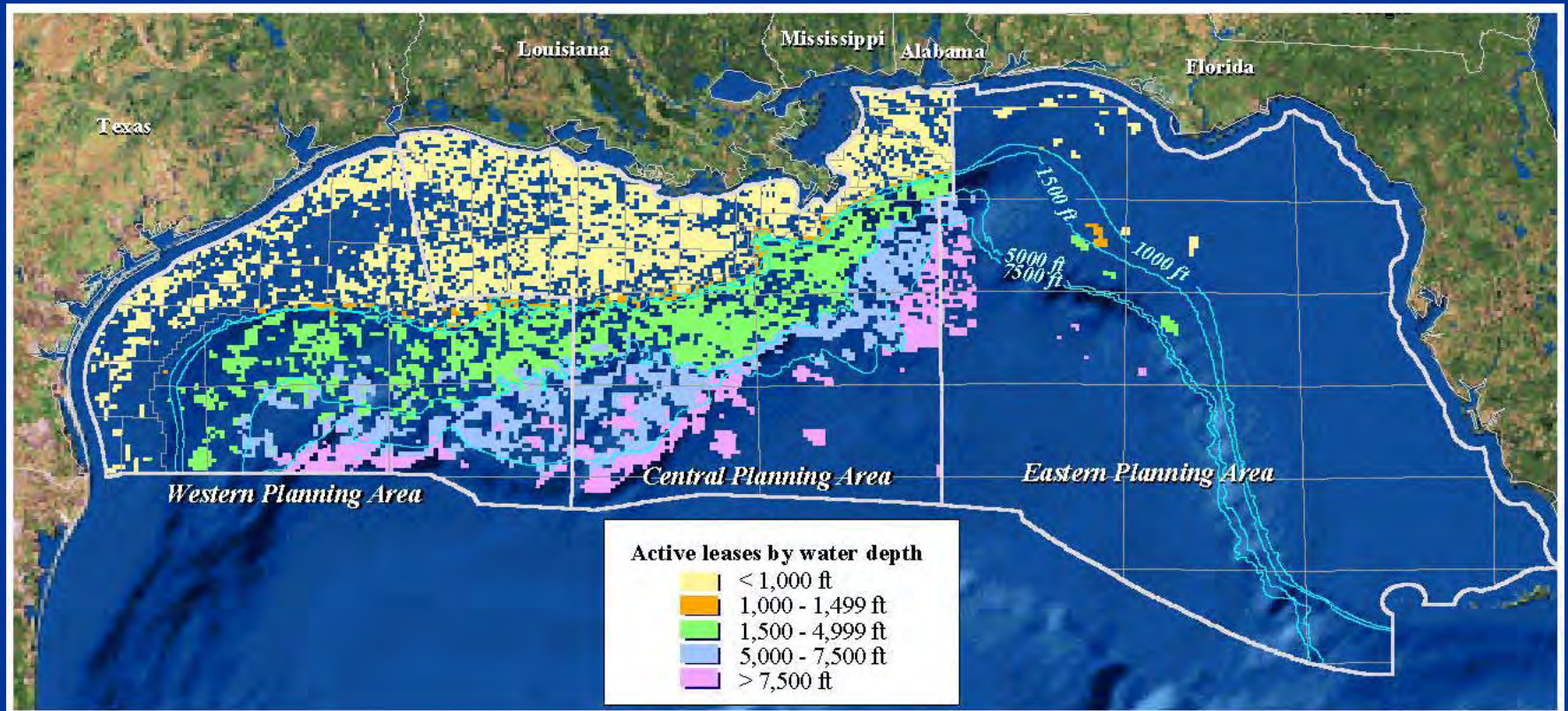
GOM Active Leases

(as of December 1, 1995)

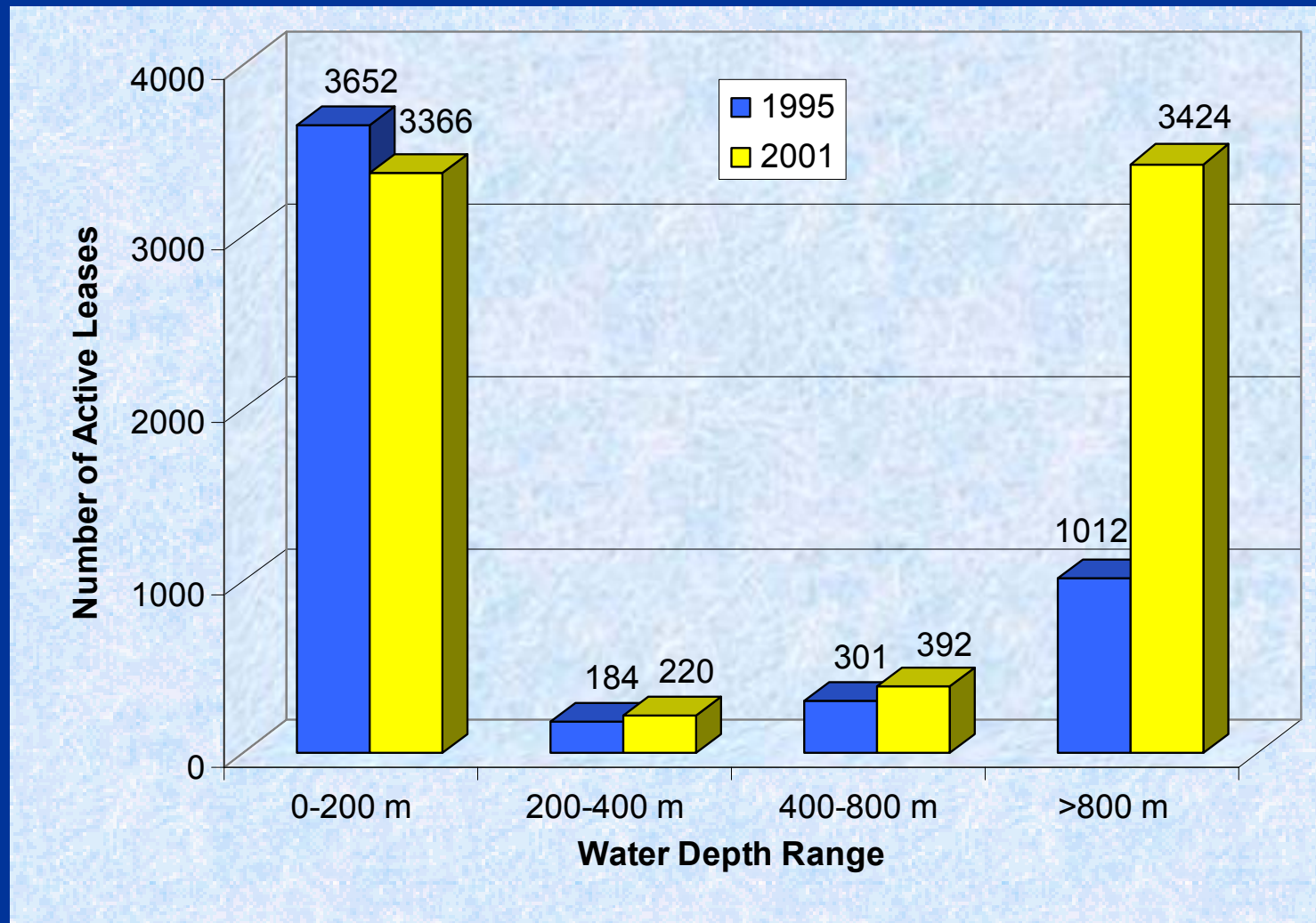


GOM Active Leases

(as of April 9, 2002)



Expanded Deepwater Leasing



GOM Deepwater Activity

- Drilling Activity

- GOM OCS (as of Sept. 16, 2002)

- 122 rigs working (total)

- 32 deepwater rigs (>1000')

- 90 shelf rigs (<1000')

- 8 deepwater rigs (>5000')

- 3 ultradeep rigs (>7500')

- 152 wells in WD > 5000'
(not including sidetracks)

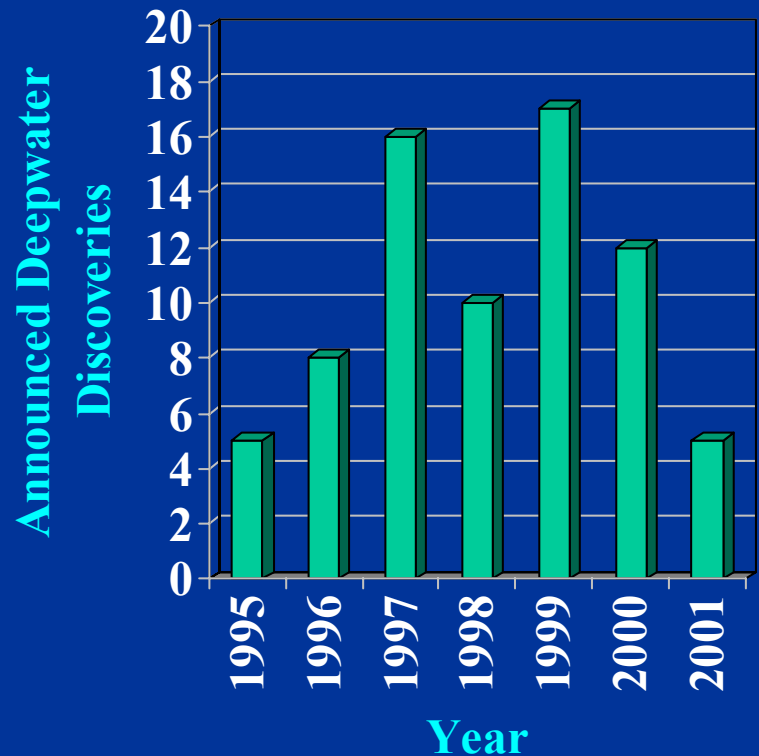
- 19 wells in WD > 7500'



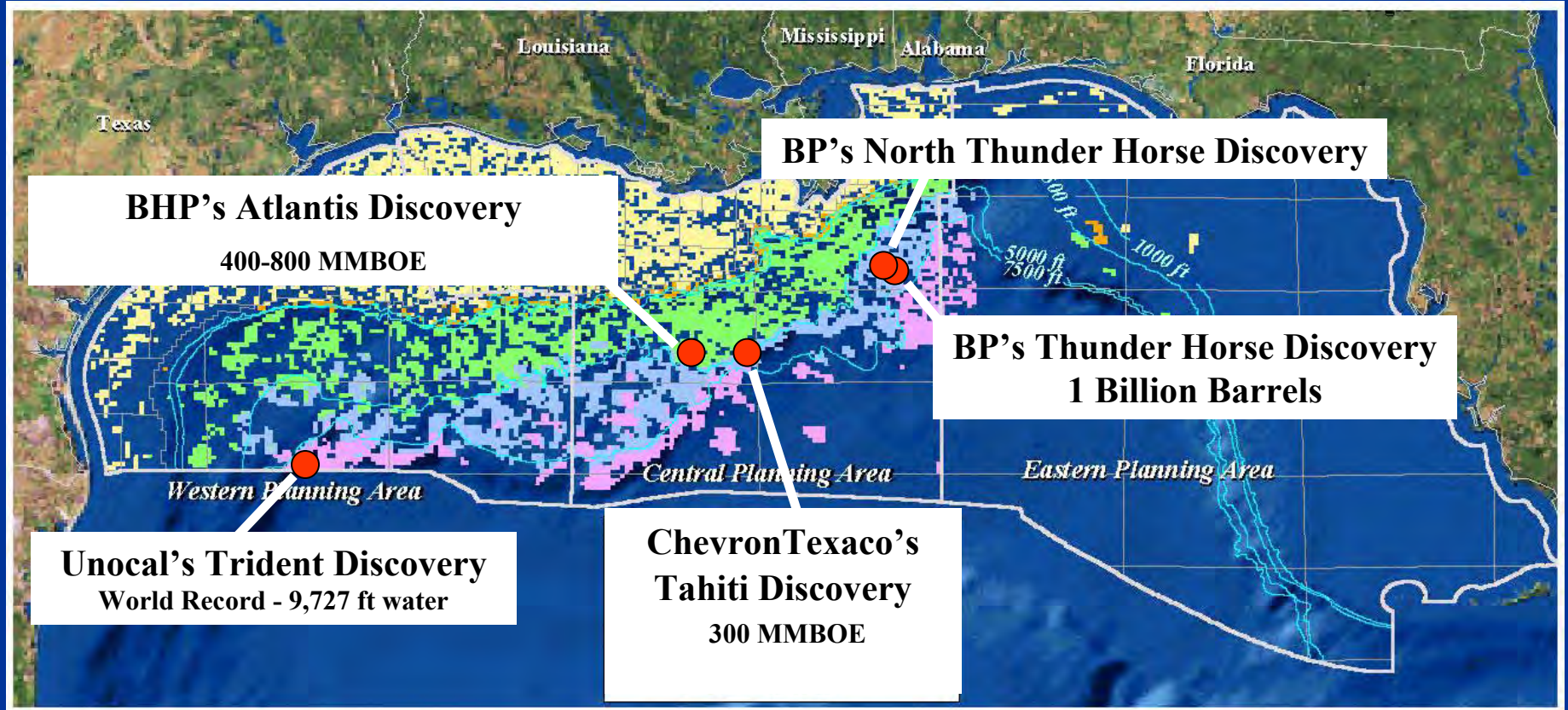
Transocean Sedco-Forex *Enterprise*

Recent Deepwater Discoveries

- Record water depths - GOM
- Central GOM most active
 - GC, MC, VK, AT, WR
 - Canyon Express, Mad Dog, Atlantis, Holstein, Crazy Horse
- Western GOM increasing
 - EB, GB, AC
 - Boomvang, Nansen, Entrada, Devil's Tower, Gunnison
- Increase from 16 development projects (1997) to 51 in 2001

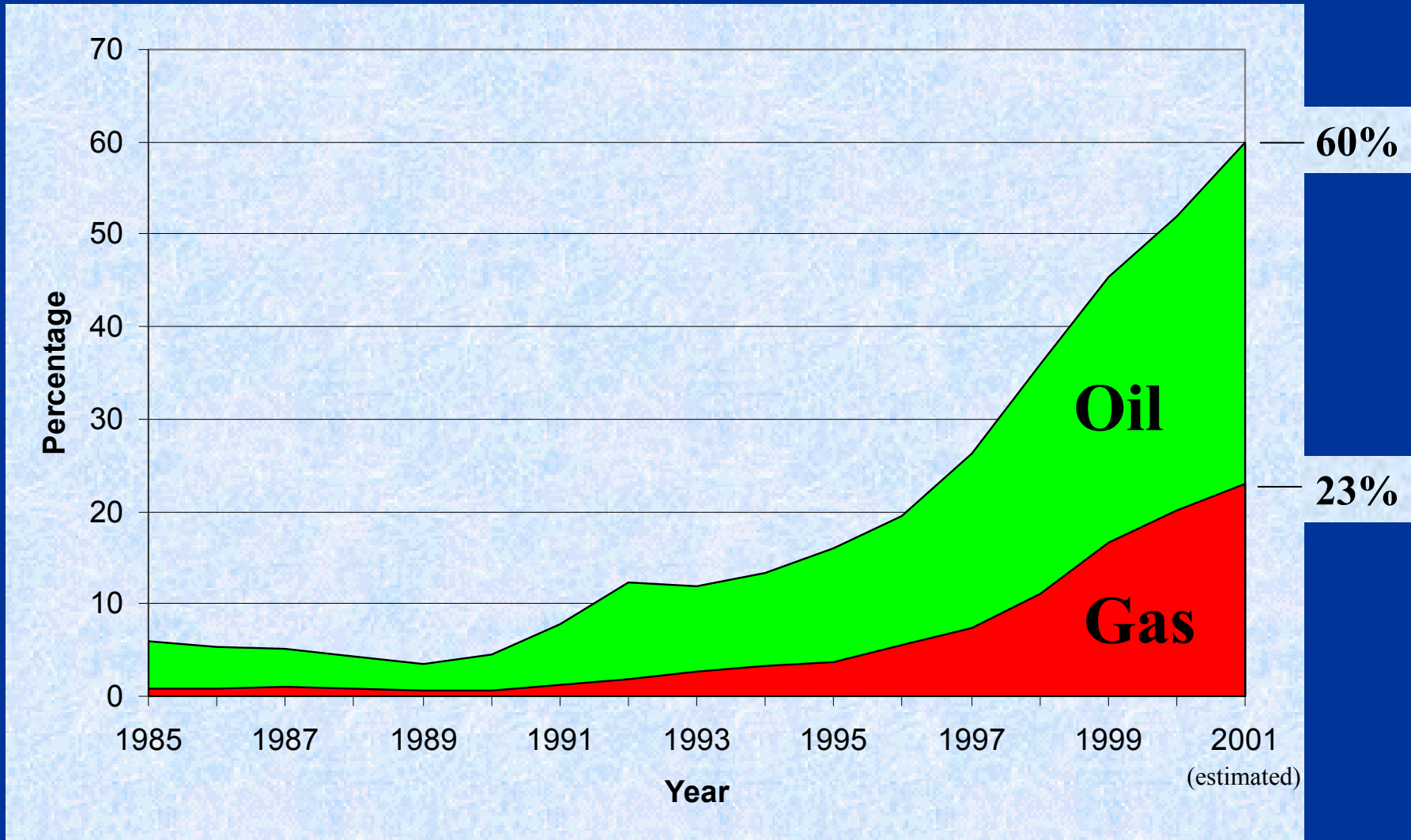


Recent GOM Activity

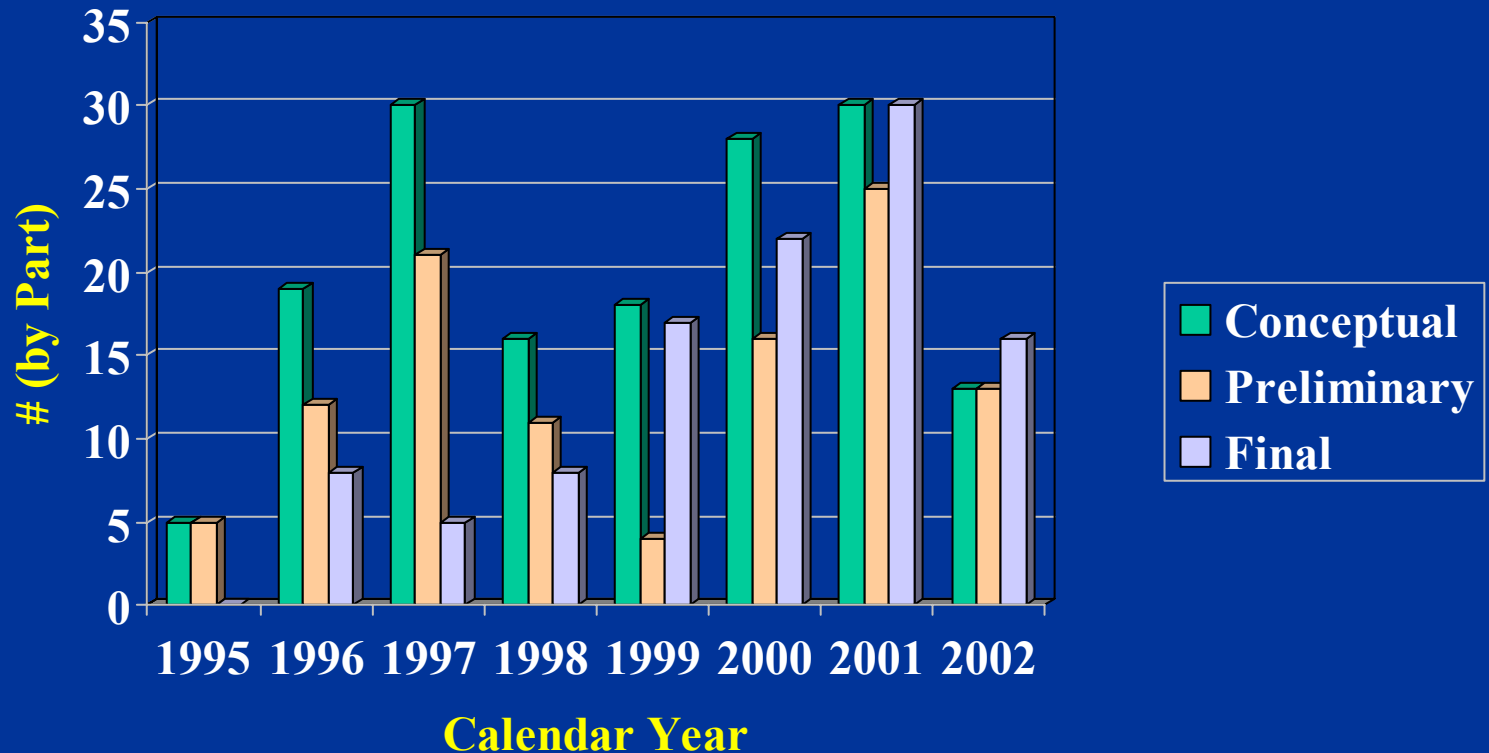


GOM OCS Deepwater Production

(Percentage of total Gulf of Mexico)



DWOP Submittals



Note: stats through September 16, 2002: C 13; P 13; F16

Thank You

www.mms.gov

www.gomr.mms.gov

james.grant@mms.gov